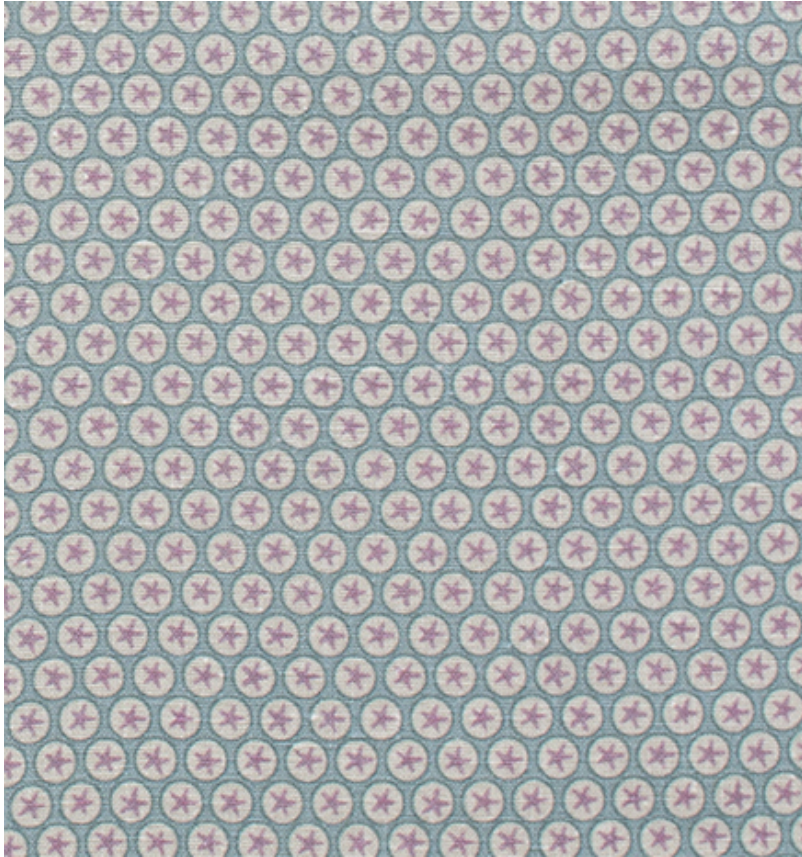




BY APPOINTMENT TO  
H. R. H. THE PRINCE OF WALES  
SUPPLIER OF  
ANTIQUE AND INTERIOR DECORATION

◆ ROBERT KIME ◆



### **Cosmos Myrtle - T0363C**

An energetic design inspired by an original C19th century Italian collection.

Material: Linen

Width: 154 cm - 60 5/8 in

Pattern Repeat: 5 cm - 1 15/16 in

Joining Width: 140 cm - 55 1/8 in

---

#### **London Showroom**

190-192 Ebury Street

London

SW1W 8UP

T: +44 (0)20 7831 6066

[www.robertkime.com](http://www.robertkime.com)