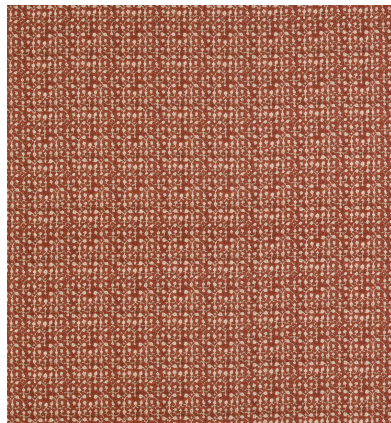
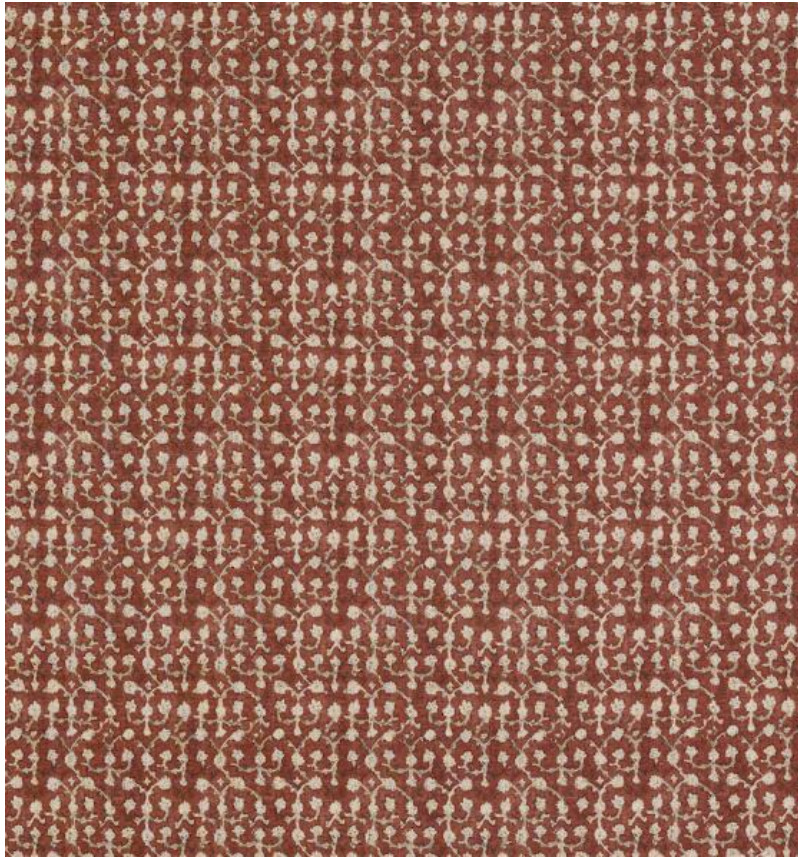


# ◆ ROBERT KIME ◆

UME  
TBRK0915



Part of the Nara Collection, the inspiration for this fabric was an original Sarasa fragment originates from the Edo period. 'Ume' or plum flower is a Sarasa block print design, which originally came from India and became popular in Japan in the 13th Century. Today, Sarasa fabrics are still regarded as exotic and valuable textiles in Japan, carefully used to create treasured small fabric items such as pouches for a tea ceremony, an Obi (a belt for a kimono) or a little bag.

**Material:** 100% Linen

**Width:** Our fabrics are produced with a minimum of 2 cm selvedge on either side of the design., **Pattern**

**Repeat:** V: 15 cm (5.9 in) H: 15 cm (5.9 in) , **Joining Width:** 132.5 cm (52.2 in) ,

**Printed Width:** 141 cm (55.5 in) ,