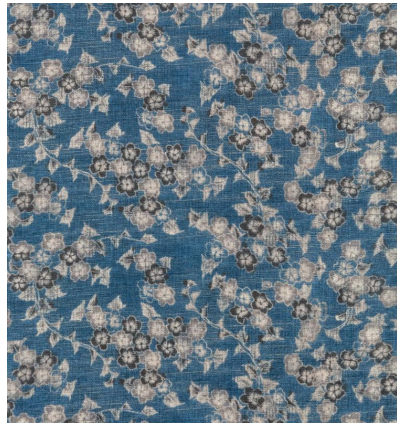
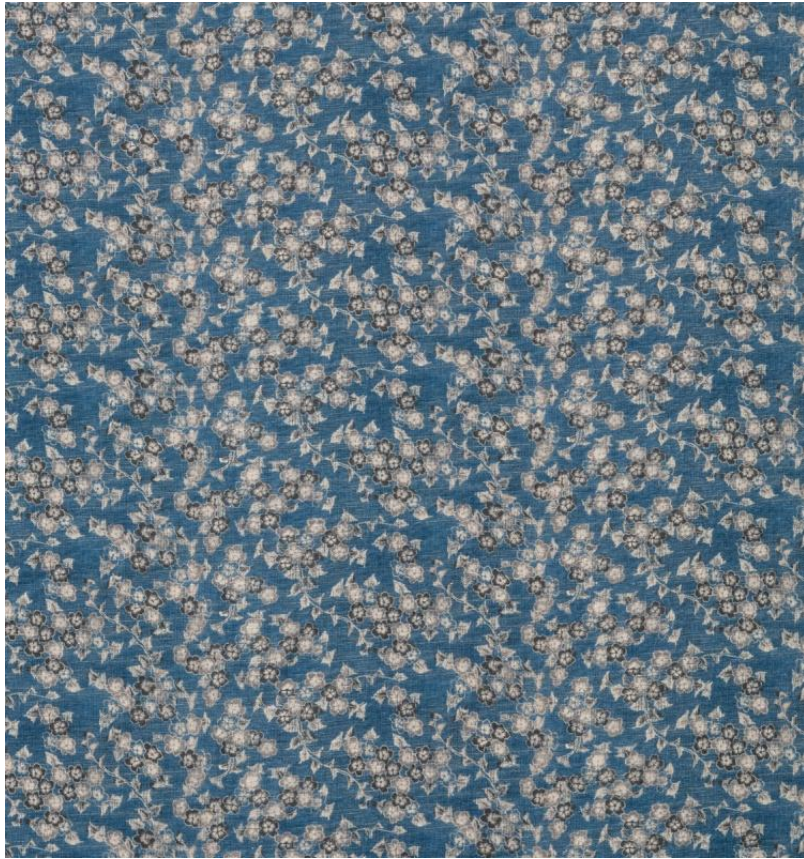


# ◆ ROBERT KIME ◆

## TSUBAKI

TBRK0939



'Tsubaki' or camellia flower is based on a fragment found by Robert during his visit to Japan. A charming floral element, outlined in black which adds a touch of grace and elegance to the fabric.

**Material:** 100% Linen

**Joining Width:** 137.5 cm (54.1 in) , **Width:** Our fabrics are produced with a minimum of 2 cm selvedge on either side of the design , **Printed Width:** 138.5 cm (54.5 in) ,

**Pattern Repeat:** V: 12 cm (4.7 in) H: 28 cm (11 in) ,