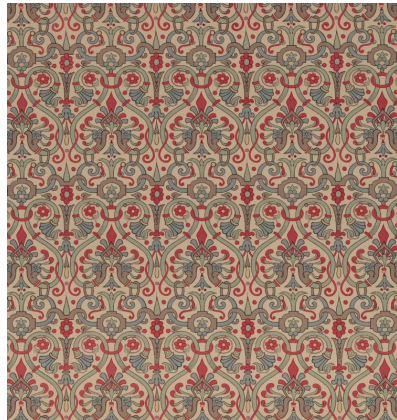


# ◆ ROBERT KIME ◆

## RABY RED

0445



Developed from a fragment bought in a sale at Raby Castle, Durham. Redesigned by Crace in the 19th Century.

**Material:** 100% Linen

**Width:** Our fabrics are produced with a minimum of 2 cm selvedge on either side of the design, **Pattern**

**Repeat:** V: 44 cm (17.3 in) H: 30 cm (11.8 in), **Joining Width:** 127 cm (50 in),