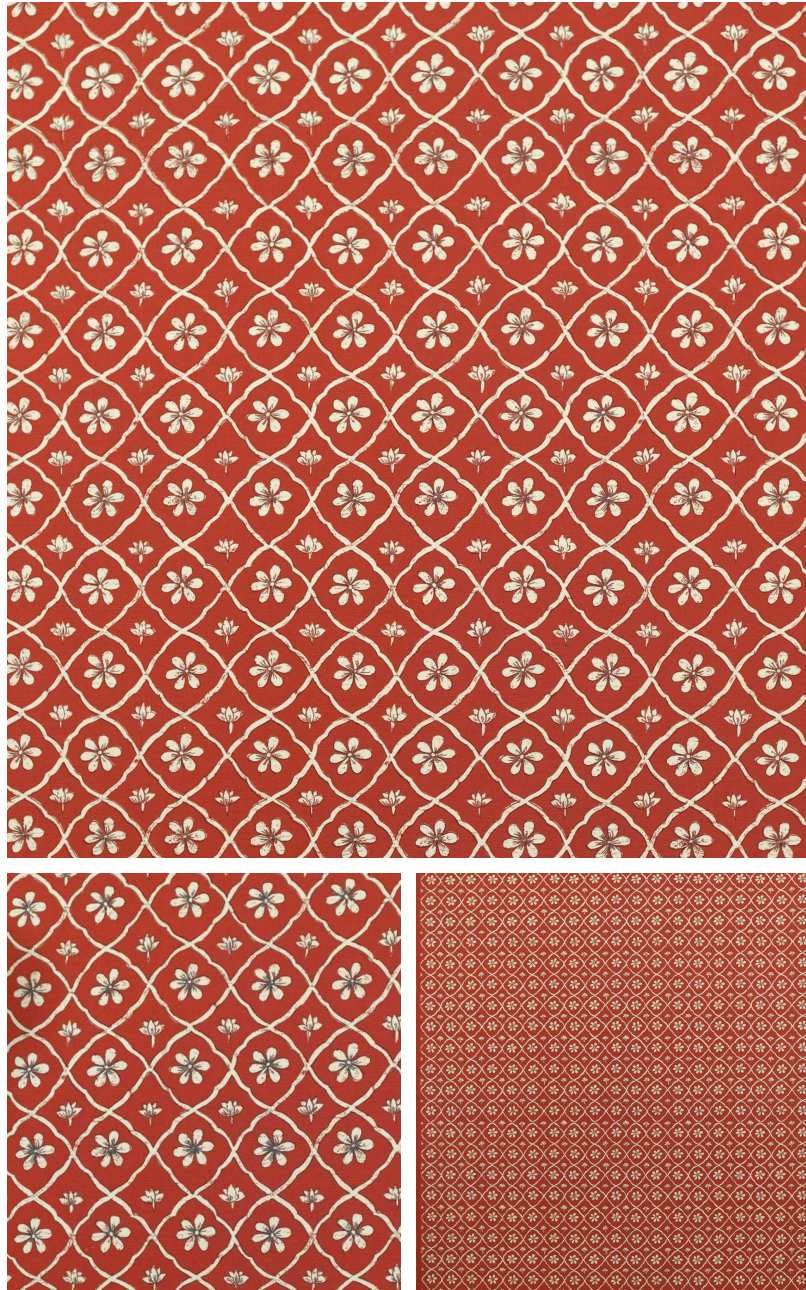


◆ ROBERT KIME ◆

PERIWINKLE

0437



A small scale pattern, inspired by a ceiling in a Mughal palace in Rajasthan, India.

Material: 67% Linen 33% Cotton

Width: Our fabrics are produced with a minimum of 2 cm selvedge on either side of the design., **Pattern**

Repeat: V: 31 cm (12.2 in) H: 22.5 cm (8.9 in) , **Joining Width:** 136 cm (53.5 in) ,

Printed Width: 144 cm (56.7 in) ,