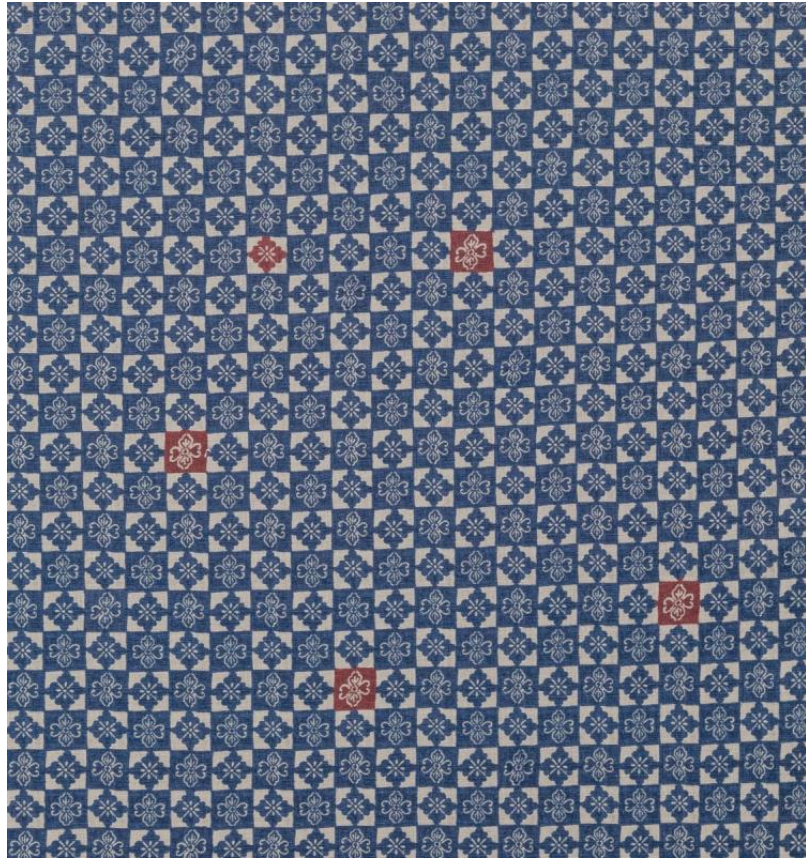


# ◆ ROBERT KIME ◆

## OSHIBANA

TBRK0936



'Oshibana' or pressed flowers is based on a Meiji period textile fragment found in Kyoto. It is a variation on a floral Hanabishi motif. The reference fabric fragment has likely come from a theatre or festival banner and this motif is popular in Japan to this day.

**Material:** 100% Linen

**Joining Width:** 137 cm (53.9 in) , **Width:** Our fabrics are produced with a minimum of 2 cm selvedge on either side of the design , **Printed Width:** 138 cm (54.3 in) ,  
**Pattern Repeat:** V: 56.5 cm (22.2 in) H: 69 cm (27.2 in) ,

---

Robert Kime Showroom, 190 - 192 Ebury Street, London, SW1W 8UP, England

T: +44 (0)20 7831 6066

[www.robertkime.com](http://www.robertkime.com)