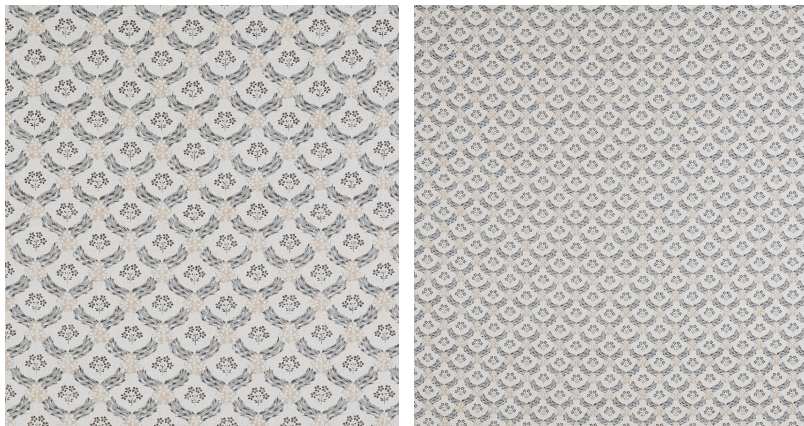


# ◆ ROBERT KIME ◆

## MYRTLE

0381



Based on a fragment from Robert's archive collection. The printed fabric showcases floral garlands in a symmetrical pattern adorned with posies.

**Material:** 50% Viscose, 33% Cotton, 11% Linen, 6% Polyester

**Width:** 148 cm - 58 1/4 in , **Pattern Repeat:** V: 65.5 cm - 25 3/4 in, H: 22.5 cm - 8 7/8 in , **Joining Width:** 135.5 cm - 53 3/8 in ,

**Printed Width:** 136.5 cm - 53 3/4 in ,

---

Robert Kime Showroom, 190 - 192 Ebury Street, London, SW1W 8UP, England

T: +44 (0)20 7831 6066

[www.robertkime.com](http://www.robertkime.com)