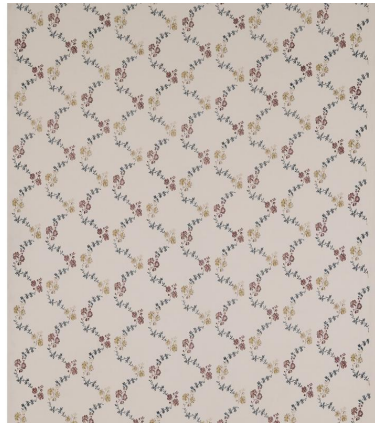


# ◆ ROBERT KIME ◆

## MAY ON MUSLIN

0927



An antique English curtain lends its inspiration to May on Muslin. Floral garlands, which climb vertically are screen printed on a lightweight cotton cloth. This fabric lends itself wonderfully for loose-lined curtains or lampshades.

**Material:** 100% Cotton

**Width:** Our fabrics are produced with a minimum of 2 cm selvedge on either side of the design., **Pattern**

**Repeat:** V: 52.5 cm (20.7 in) H: 43 cm (16.9 in) , **Joining Width:** 133 cm (52.4 in) ,