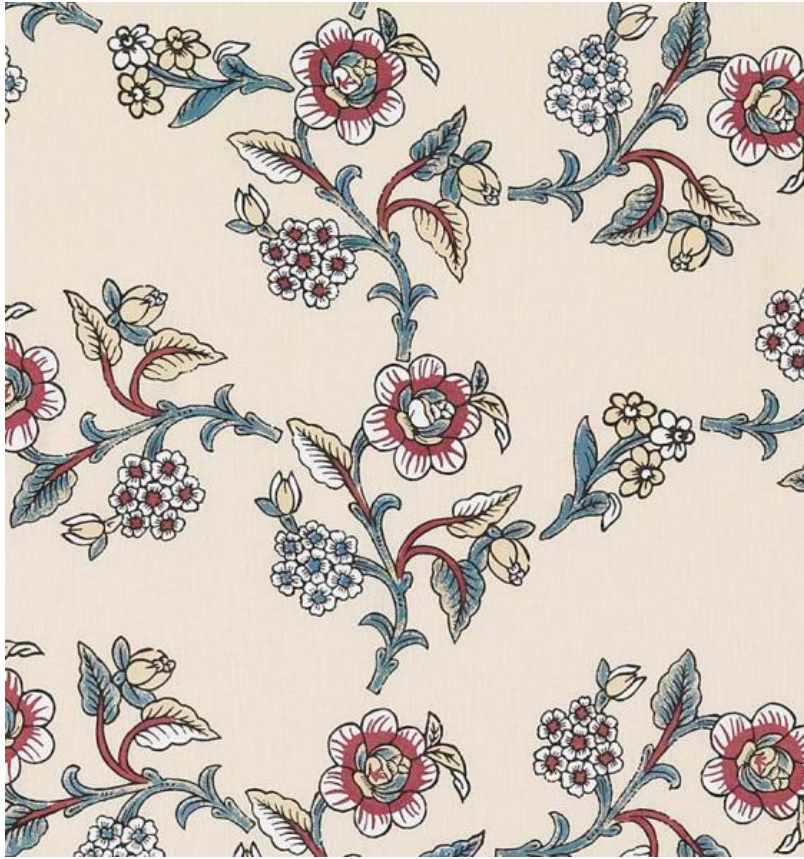


◆ ROBERT KIME ◆

MARMARA

0707



A stylised floral tipped in white, inspired by an original woodblock Kandelli print once often found throughout the old Ottoman Empire.

Material: 100% Linen

Width: Our fabrics are produced with a minimum of 2 cm selvedge on either side of the design, **Pattern**

Repeat: V: 71 cm (28 in) H: N/A, **Joining Width:** 131 cm (51.6 in) ,

Printed Width: 131 cm (51.6 in) ,