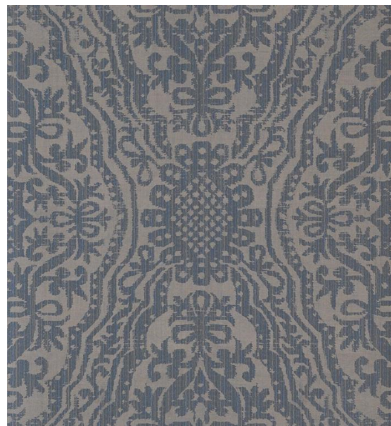
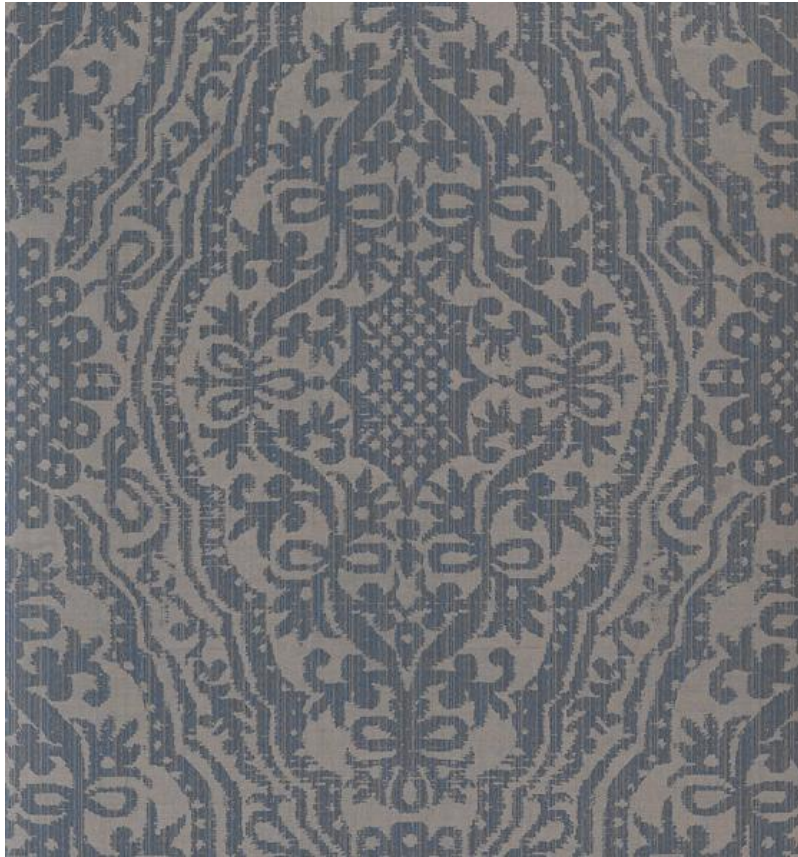


◆ ROBERT KIME ◆

KONYA SMOKE

0332A



An Arts & Crafts Gothic design reflecting Charles Voysey's architectural influence.

Roll Length: 10 m (11 yards) , **Roll Width:** 52 cm (20.5 in) , **Pattern Repeat:** 76.5 cm (30.1 in) ,