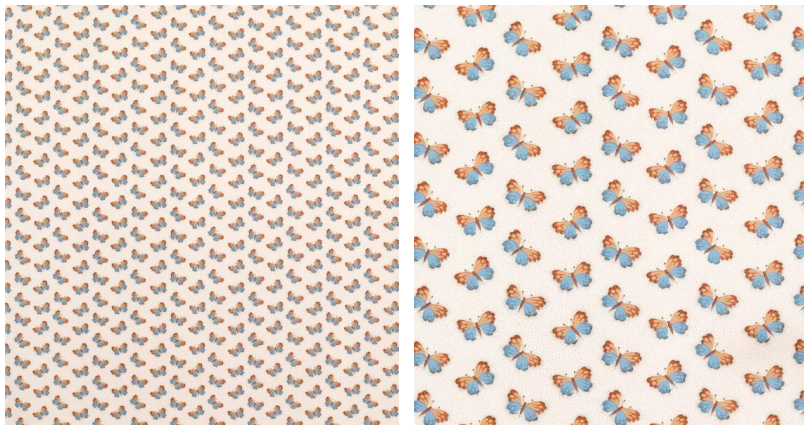


◆ ROBERT KIME ◆

KILVERT'S BLUE

0442



Based on a 19th Century English chintz found in the attic of David Vicary's magical house, Kilvert's Parsonage.

Material: 100% Cotton

Width: 149 cm - 58 11/16 in , **Pattern Repeat:** V: 8.5 cm (3.3 in) H: 15.5 cm (6.1 in) , **Joining Width:** 138 cm (54.3 in) ,

Printed Width: 138 cm (54.3 in) ,