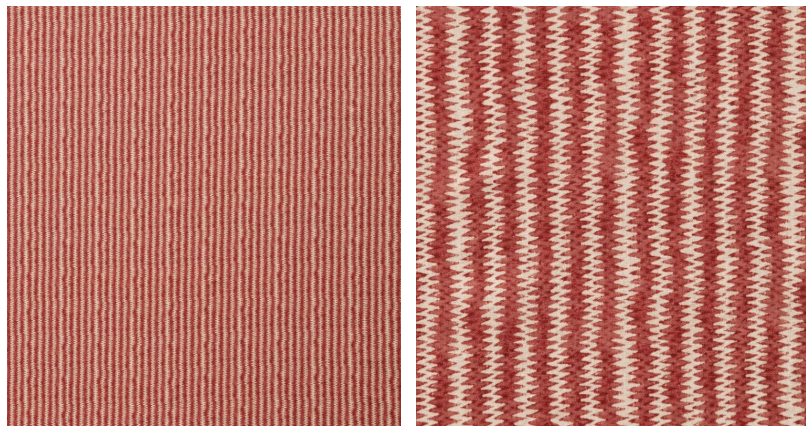
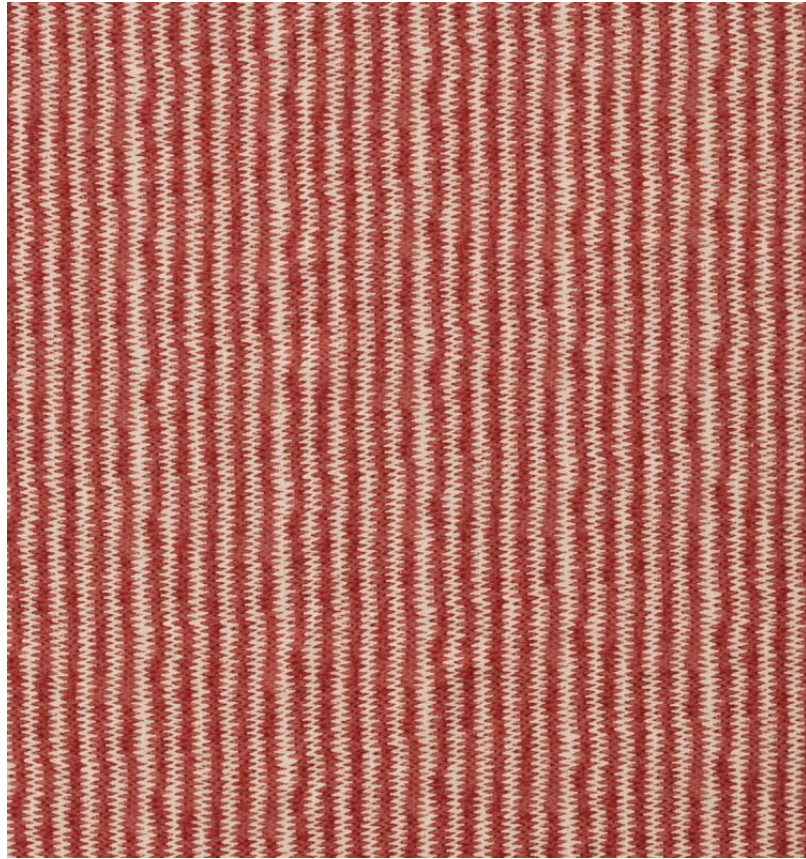


◆ ROBERT KIME ◆

INAZUMA

TBRK0934



'Inazuma', or lightning symbolizes the rain showers that foster the growth of rice. Similar to 'Hanabi', this fabric is derived from a small reference that was meticulously reconstructed to create a full pattern repeat.

Material: 100% Linen

Joining Width: 136.5 cm (53.7 in) , **Width:** Our fabrics are produced with a minimum of 2 cm selvedge on either side of the design , **Printed Width:** 138.5 cm (54.5 in) ,

Pattern Repeat: V: 22.5 cm (8.9 in) H: 22 cm (8.6 in) ,