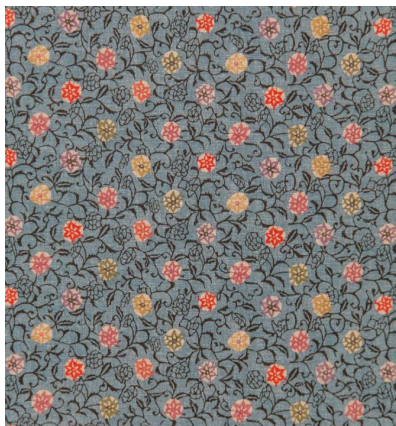


# ◆ ROBERT KIME ◆

## HANATABA

TBRK0905



Based on a Bingata fragment found by Robert and Tory in Japan, Hanataba means a bouquet of flowers. It is a digitally printed fabric depicting brightly coloured flowers and interlacing leaves. Traditionally these special fabrics were worn underneath clothes or used as lining; simply to be appreciated by the wearer and not by anyone else.

**Material:** 100% Linen

**Joining Width:** 136.8 cm (53.9 in) , **Width:** Our fabrics are produced with a minimum of 2 cm selvedge on either side of the design , **Printed Width:** 141.8 cm (55.8 in) ,

**Pattern Repeat:** V: 9 cm (3.5 in) H: 25 cm (9.9 in) ,