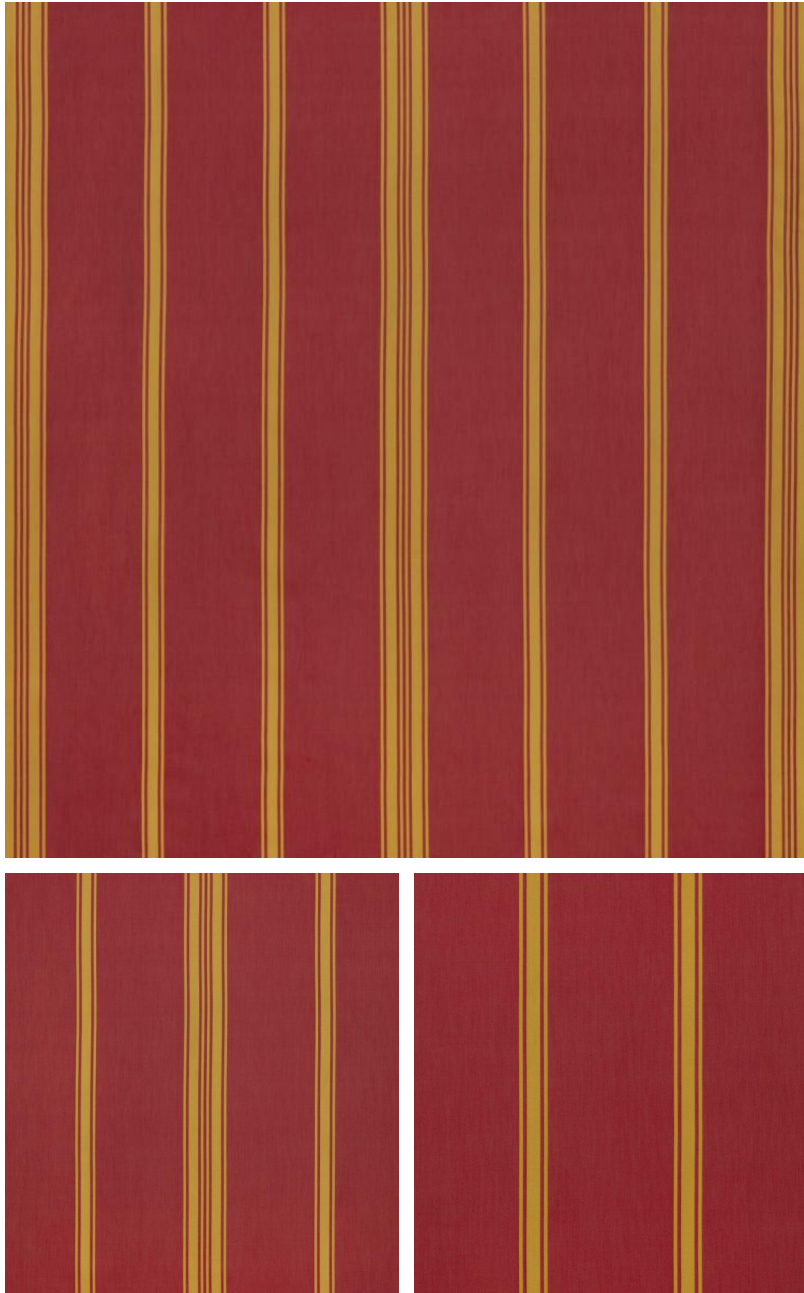


◆ ROBERT KIME ◆

DELAMAIN CHERRY

0468C



A tailored silk and cotton reversible weave, can be used in conjunction with Damask Panel.

Material: 51% Silk, 49% Cotton

Width: 128 cm (50.4 in) , **Pattern Repeat:** V: N/A, H: 61.5 cm (24 in) , **Joining Width:** 122 cm (48 in) ,