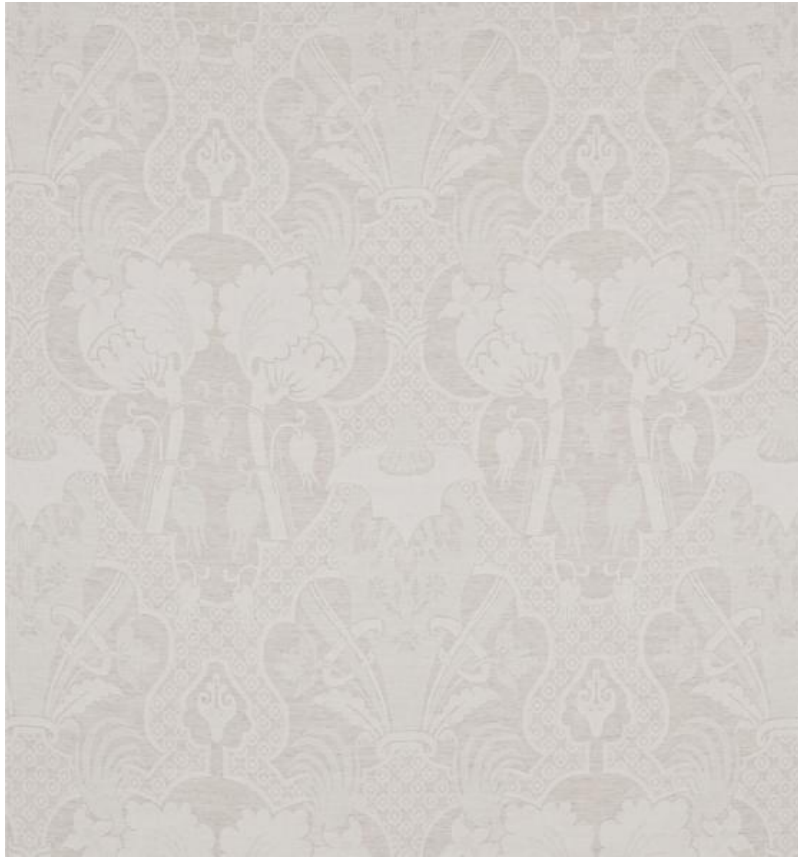


◆ ROBERT KIME ◆

CORA VOILE

0298



An unusual woven design taken from a fragment found in Robert's archives. The lightweight, finely woven sheer fabric is an adaptation on the existing Cora linen.

Material: 100% Linen

Width: 138.5 cm (54.5 in) , **Pattern Repeat:** 91 cm (35.8 in) , **Joining Width:** 128 cm (50.4 in) ,