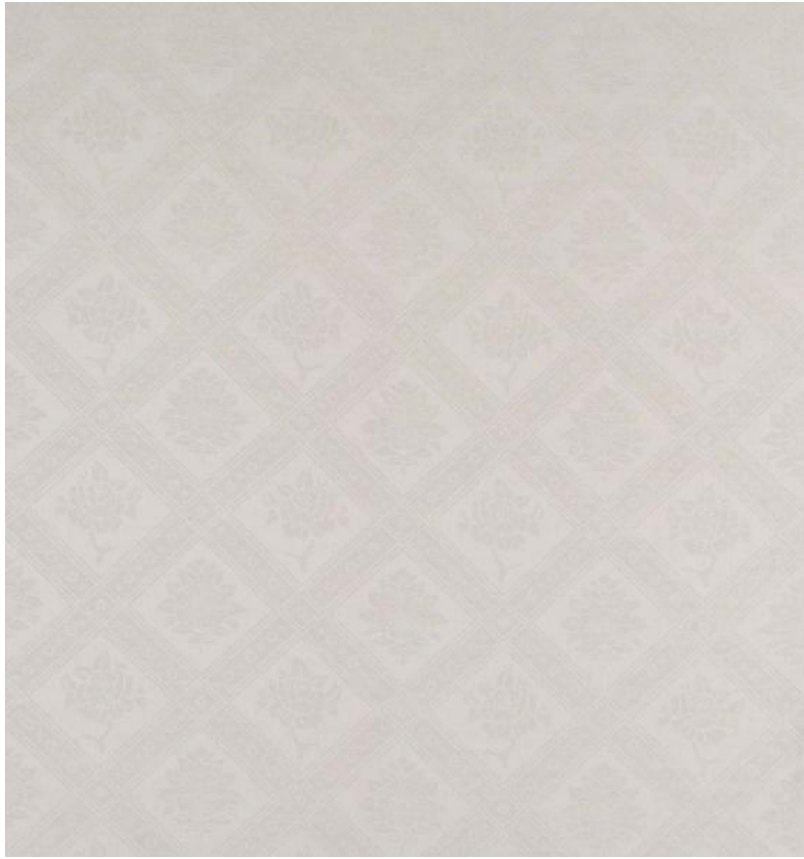


◆ ROBERT KIME ◆

BELGIAN LINEN CREAM

0467



Inspired by a 19th Century drugget design, this gentle floral trellis pattern is woven in coarse Belgian Linen. Also available in a beige and cream colourway.

Material: 35% Cotton, 32% Linen, 25% Viscose, 8% Flax

Width: 138 cm (54.3 in) , **Pattern Repeat:** V: 34 cm (13.4 in) H: 34 cm (13.4 in) , **Joining Width:** 128 cm (50.4 in) ,