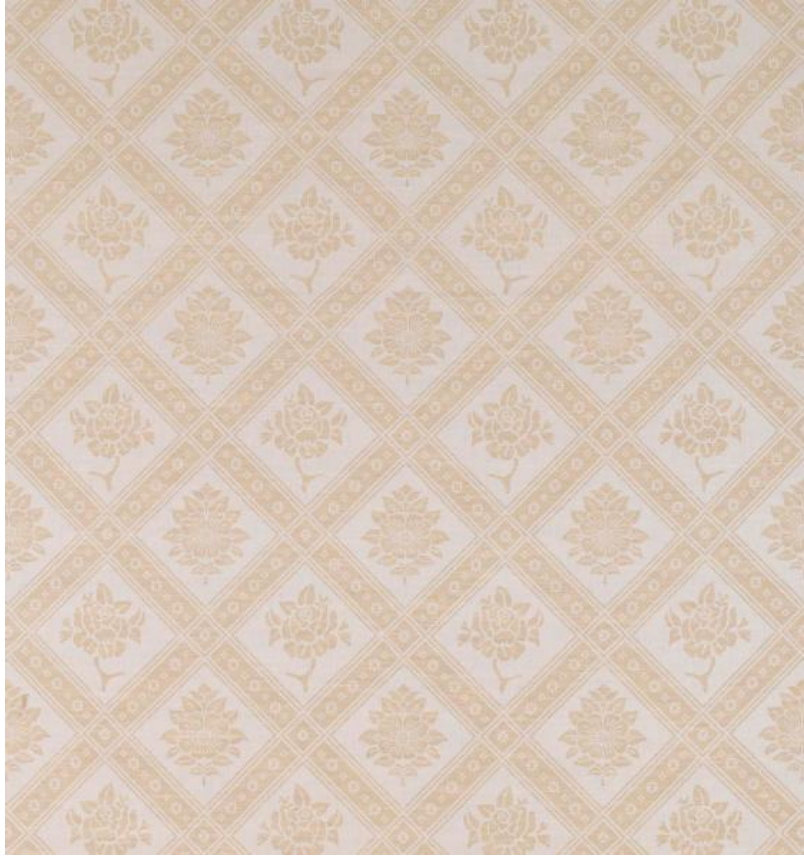


◆ ROBERT KIME ◆

BELGIAN LINEN BEIGE & CREAM

0567



Inspired by a 19th Century drugget design woven in coarse Belgian linen.

Material: 35% Cotton, 32% Linen, 25% Viscose, 8% Flax

Width: 137 cm (53.9 in) , **Pattern Repeat:** V: 34 cm (13.4 in) H: 34 cm (13.4 in) , **Joining Width:** 128 cm (50.4 in) ,