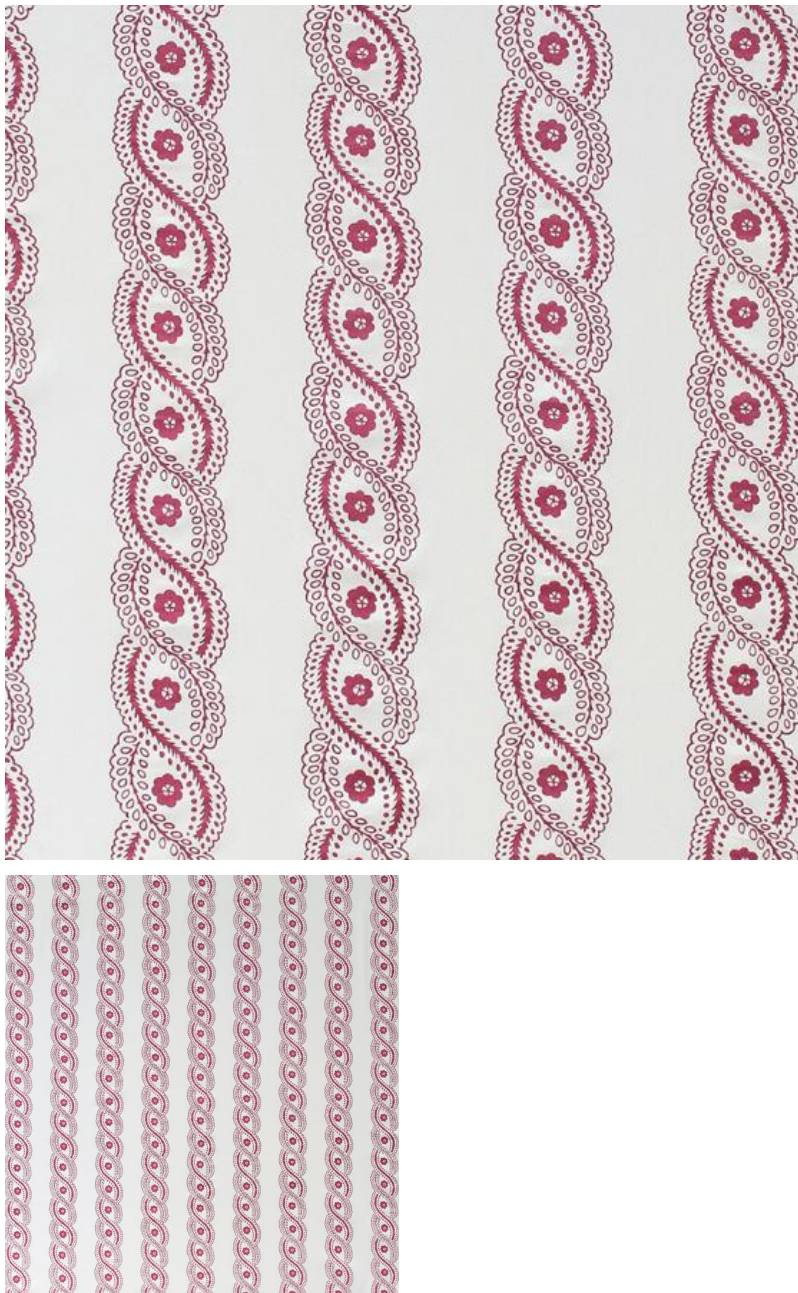


# ◆ ROBERT KIME ◆

## BARLEY TWIST NATURAL

0503



A design adapted from a charming English Arts & Crafts pattern, printed on a fine cotton.

**Material:** 100% Cotton

**Pattern Repeat:** V: 58.5 cm (23 in) H: 30.5 cm (12 in), **Joining Width:** 140 cm (55.1 in) , **Printed Width:** 140 cm (55.1 in) ,

**Width:** Our fabrics are produced with a minimum of 2 cm selvedge on either side of the design